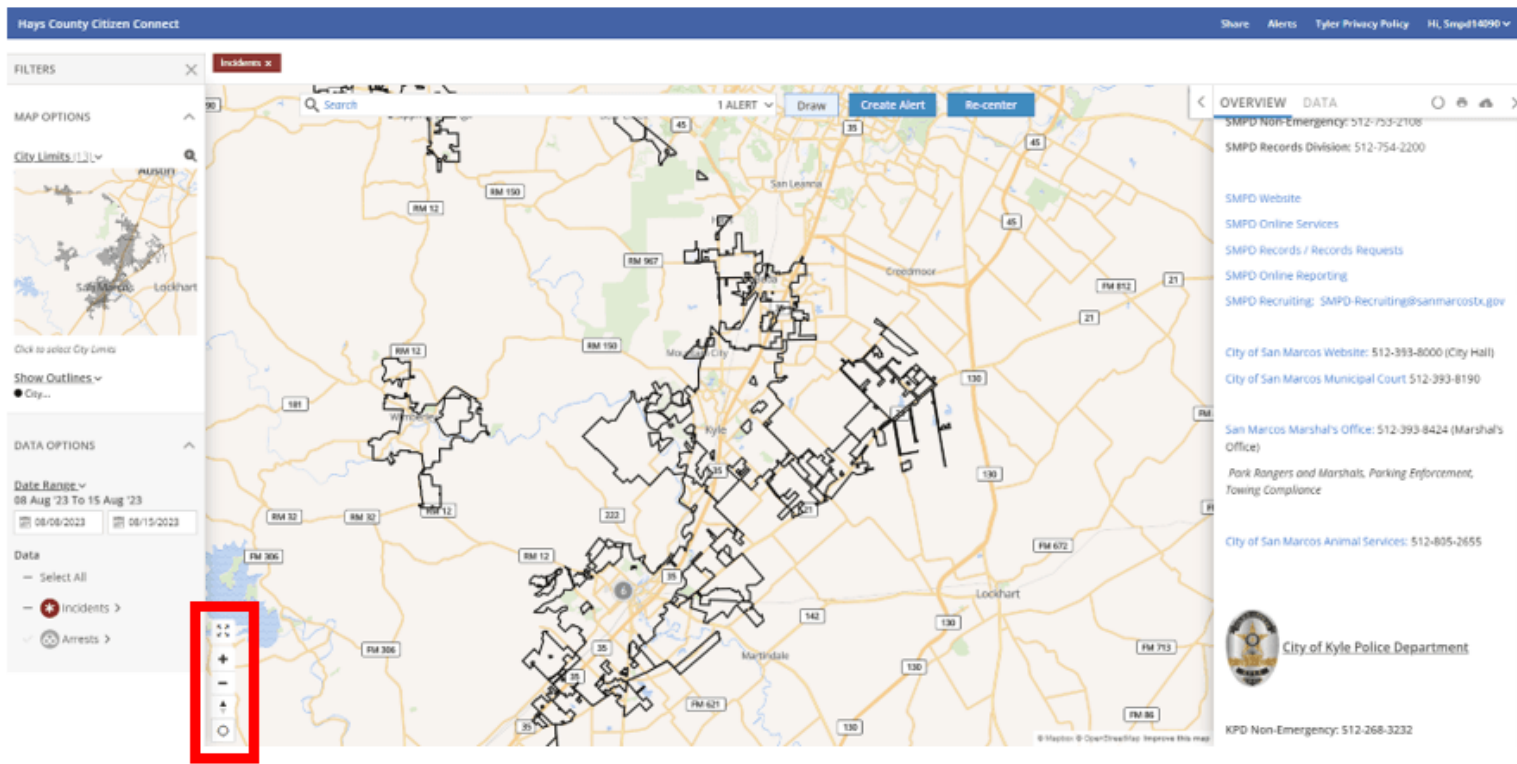


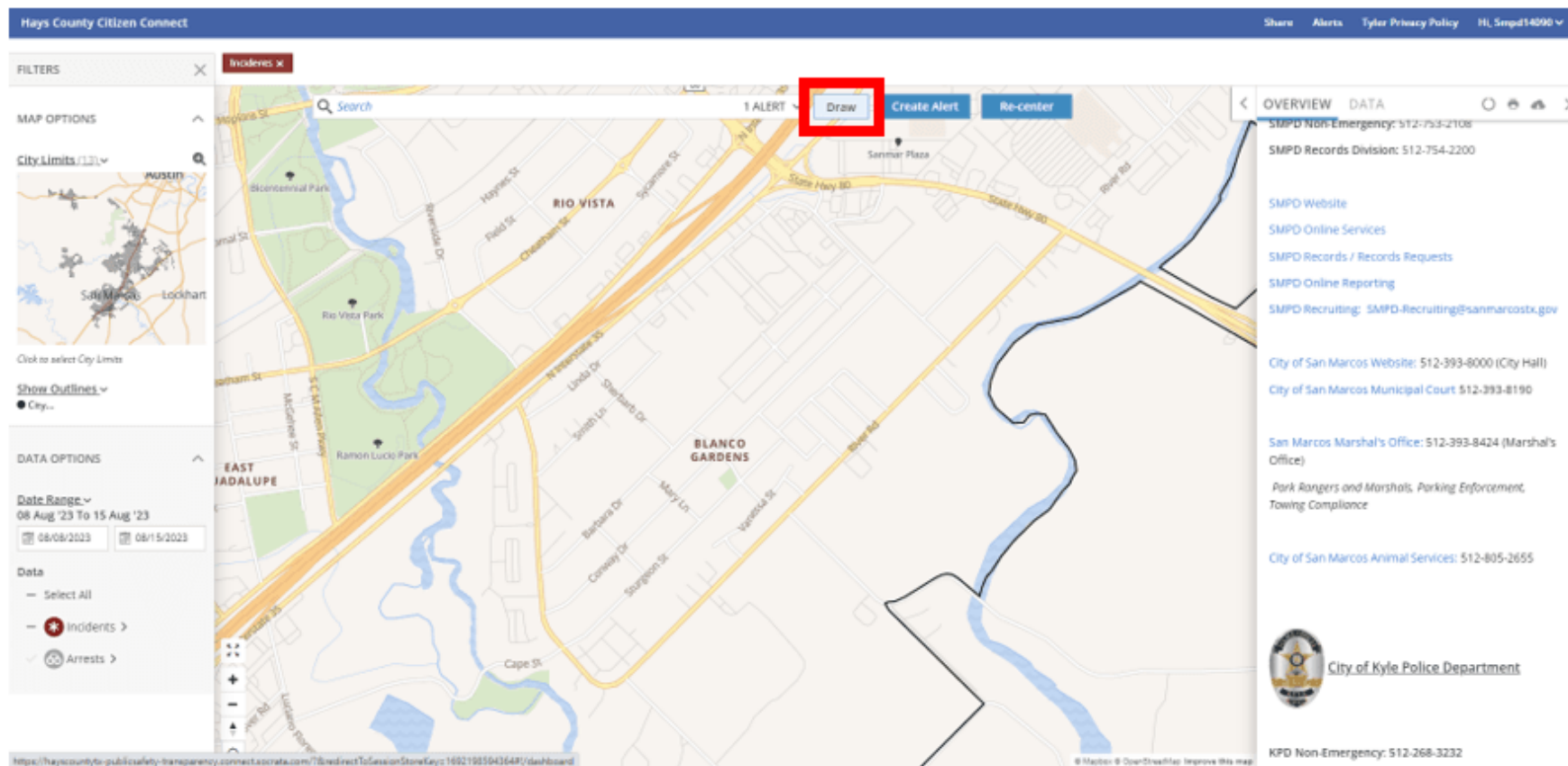
How to Create Location-Based Alerts with Citizen Connect

Location-based alerts will notify you when a specific incident occurred or crime was reported in a certain location, such as an individual address, block range, or subdivision. You will be able to create your own boundary, using the draw tool in the Citizen Connect home page. To set up these alerts, be sure to create an account first as Socrata will prompt you to log-in when creating an alert. For help on setting up these alerts, follow the instructions below:

1. To successfully create a location alert, you must be in the Socrata homepage and preferably logged into your account
2. First, zoom to the general location of interest using the map tools on the bottom left-hand portion of the map (or you can simply use your mouse to zoom in and out)



3. Once the map is narrowed down to the general location of interest, use the Draw tool at the top of the map to begin creating a boundary around the targeted area. For instance, in the photo below, the Blanco Gardens neighborhood in San Marcos was the location of interest.



4. Once you are satisfied with the drawn area, double click to set the alert boundary

The screenshot displays the Hays County Citizen Connect web application interface. At the top, a blue navigation bar contains the text "Hays County Citizen Connect" on the left and "Share Alerts Tyler Privacy Policy HI, Smpd14090" on the right. Below the navigation bar, the interface is divided into several sections:

- FILTERS:** A dropdown menu labeled "Incidents x" is visible.
- MAP OPTIONS:** Includes a search bar, a "1 ALERT" indicator, and buttons for "Reset", "Create Alert", and "Re-center".
- City Limits (13):** A small inset map shows the location of the current view within the larger Hays County area.
- DATA OPTIONS:** Features a "Date Range" selector set to "08 Aug '23 To 15 Aug '23" and a "Data" list with "Incidents" selected.
- Map:** The main map shows a street grid with a red dashed line forming a polygonal alert boundary. Labeled areas include "RIO VISTA", "BLANCO GARDENS", and "EAST JADALUPE".
- OVERVIEW DATA:** A sidebar on the right provides contact information for the San Marcos Police Department (SMPD) and the City of Kyle Police Department (KPD).
 - SMPD Non-Emergency: 512-753-2108
 - SMPD Records Division: 512-754-2200
 - SMPD Website
 - SMPD Online Services
 - SMPD Records / Records Requests
 - SMPD Online Reporting
 - SMPD Recruiting: SMPD-Recruiting@sanmarcostx.gov
 - City of San Marcos Website: 512-393-8000 (City Hall)
 - City of San Marcos Municipal Court: 512-393-8190
 - San Marcos Marshal's Office: 512-393-8424 (Marshal's Office)
 - Park Rangers and Marshals, Parking Enforcement, Towing Compliance
 - City of San Marcos Animal Services: 512-805-2655
 - City of Kyle Police Department logo and name
 - KPD Non-Emergency: 512-268-3232

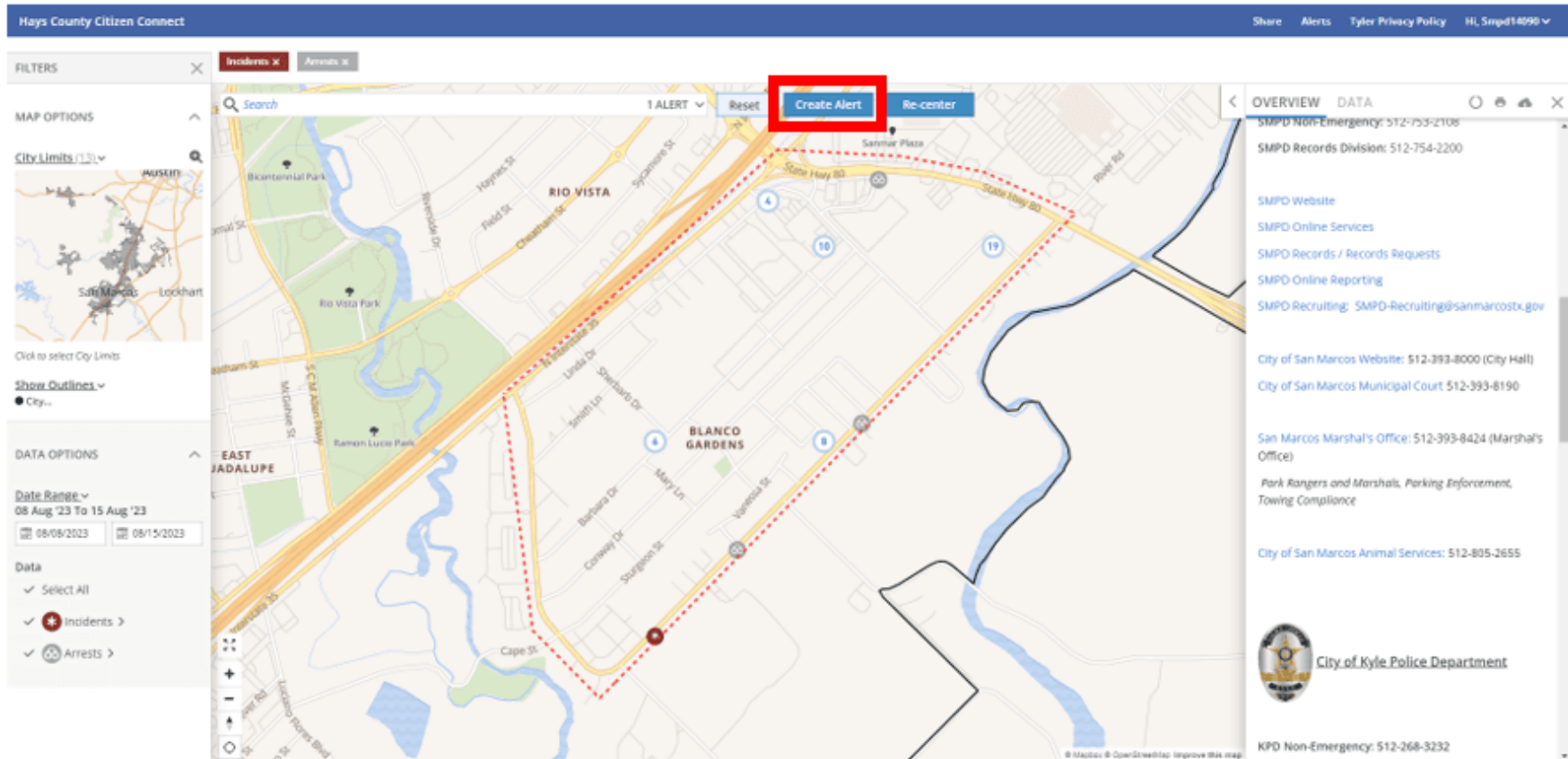
5. Do not forget to adjust your filters on the left-side of the map. This will determine what jurisdiction or incident information is provided in your alert. If you need assistance on this, please refer to the How to Create Incident-based Alerts with Citizen Connect. Because the location-based search is used, simply selecting all on the filter under Data will provide alerts on all reported criminal activity in the area. Please note that if no filter information is selected, no information will be shared via alerts.

The screenshot displays the Hays County Citizen Connect web application. The interface includes a top navigation bar with 'Share', 'Alerts', 'Tyler Privacy Policy', and a user profile 'HI, Smpd14090'. Below the navigation bar, there are 'FILTERS' and 'MAP OPTIONS' sections. The 'FILTERS' section has tabs for 'Incidents' and 'Arrests'. The 'MAP OPTIONS' section includes a search bar, a '1 ALERT' indicator, and buttons for 'Reset', 'Create Alert', and 'Re-center'. The main map area shows a street grid with a red dashed boundary around a specific area. The 'DATA OPTIONS' section is highlighted with a red box and contains the following information:

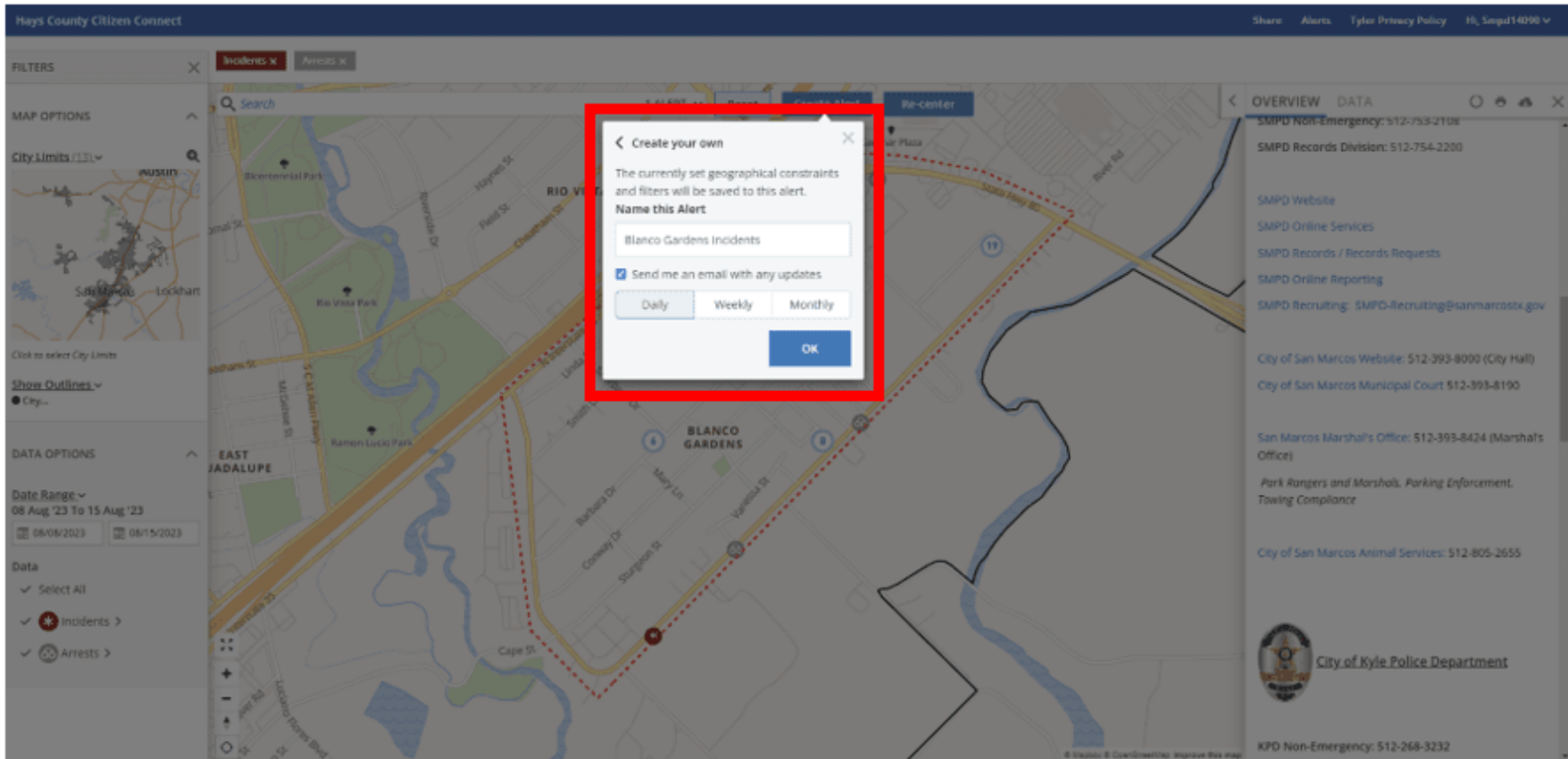
- DATA OPTIONS**
- Date Range: 08 Aug '23 To 15 Aug '23
- 08/08/2023 08/15/2023
- Data
- Select All
- Incidents >
- Arrests >

The right side of the interface features an 'OVERVIEW DATA' panel with contact information for the San Marcos Police Department (SMPD) and the City of Kyle Police Department (KPD). The SMPD contact information includes: SMPD Non-Emergency: 512-753-2108, SMPD Records Division: 512-754-2200, SMPD Website, SMPD Online Services, SMPD Records / Records Requests, SMPD Online Reporting, and SMPD Recruiting: SMPD-Recruiting@sanmarcostx.gov. The City of Kyle Police Department contact information includes: City of San Marcos Website: 512-393-8000 (City Hall), City of San Marcos Municipal Court: 512-393-8190, San Marcos Marshal's Office: 512-393-8424 (Marshal's Office), Park Rangers and Marshals, Parking Enforcement, Towing Compliance, and City of San Marcos Animal Services: 512-805-2655. The KPD Non-Emergency number is 512-268-3232.

6. When satisfied with the parameters of the alert, select Create Alert



8. Select Create your own, and provide a name and select how often you would like to receive these alerts




9. Once saved, you can go to the Alerts tab on the top right-hand corner of the home page to manage your alerts. From here, you can rename them, delete them, or view them on the map as a saved search

Hays County Citizen Connect Share My Alerts (2) Tyler Privacy Policy HI, Smpd14090

My Alerts (2) Delete All | Unsubscribe from All ✕

Blanco Gardens Events




Selected Filters: Incidents, Arrests
Selected Shape Group: City Limits
Created on: 08/17/2023
Frequency: Daily

[Rename](#) | [Delete](#) | [View on Map](#)

Send me an email with any updates

Daily Weekly Monthly

TXSTATE Accidents



Selected Filters: Incidents
Selected Shape Group: City Limits
Created on: 08/16/2023
Frequency: Daily

[Rename](#) | [Delete](#) | [View on Map](#)

Send me an email with any updates

Daily Weekly Monthly