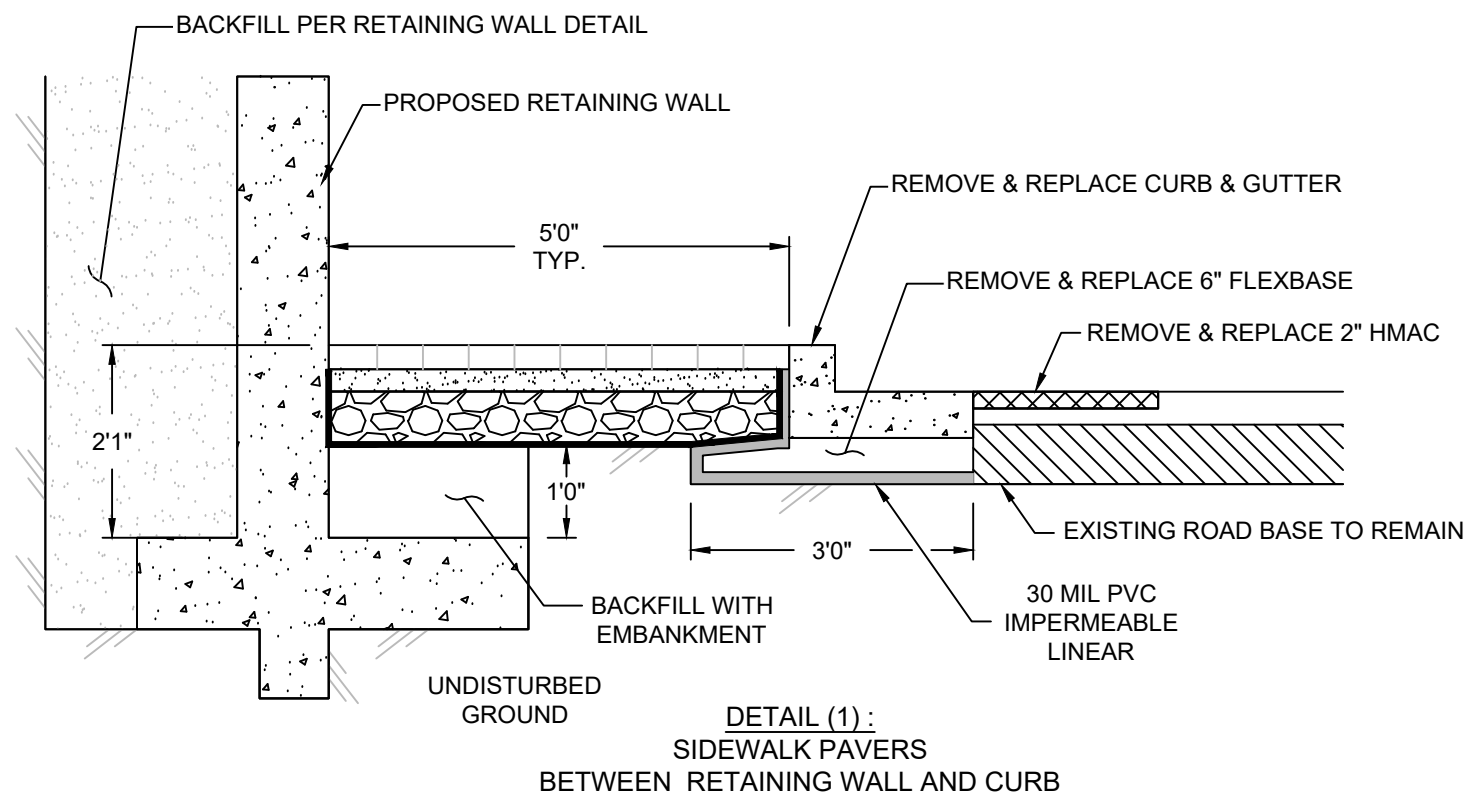
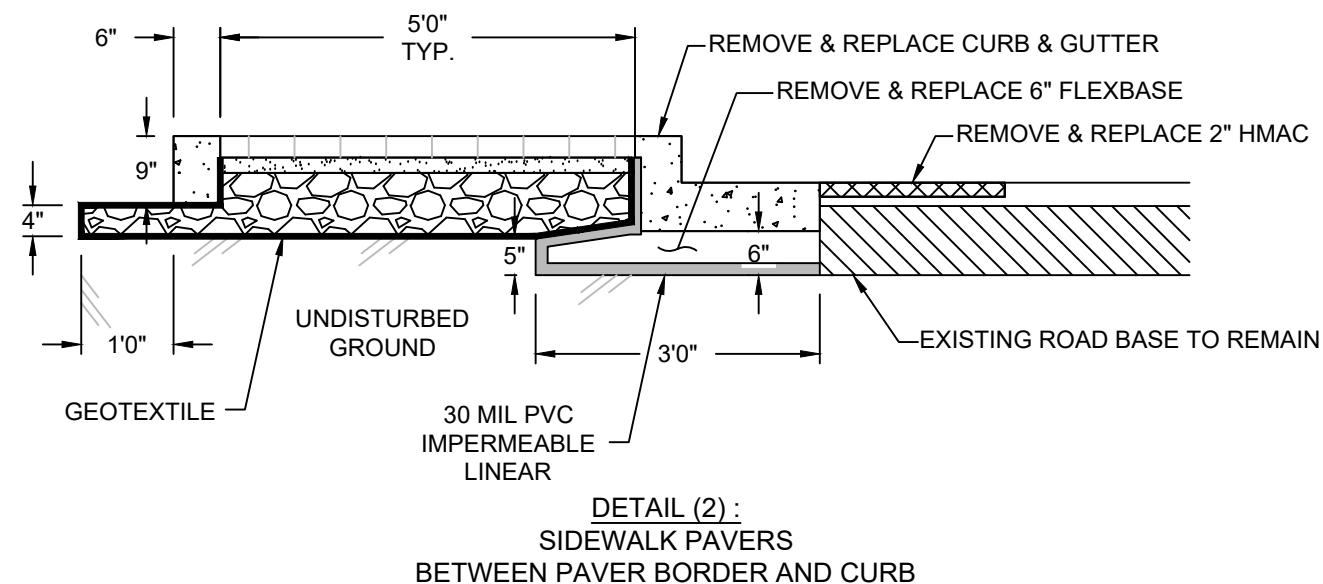


NOTE:

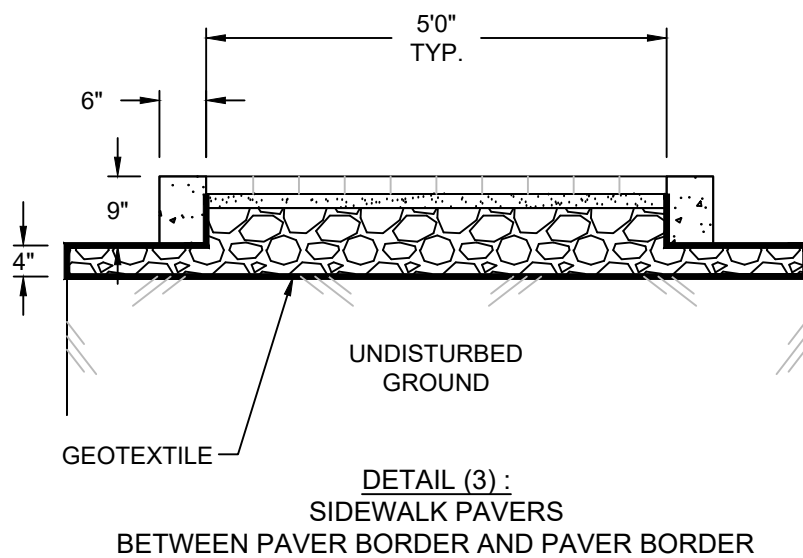
- #3 REBAR WILL BE CENTERED IN CONCRETE CURB PER DETAIL.
- CONTROL JOINT SHOULD BE TOOLED EVERY 10 FEET ALONG LENGTH OF TRAIL.
- CONSTRUCT 3/4" REDWOOD EXPANSION JOINTS AT MAXIMUM 40'-0" SPACING ALONG LENGTH OF TRAIL. EXPANSION JOINTS SHALL INCLUDE A SMOOTH DOWEL CENTERED IN CURB PLACED 6" FROM TOP AND BOTTOM AND 3" FROM EACH SIDE.



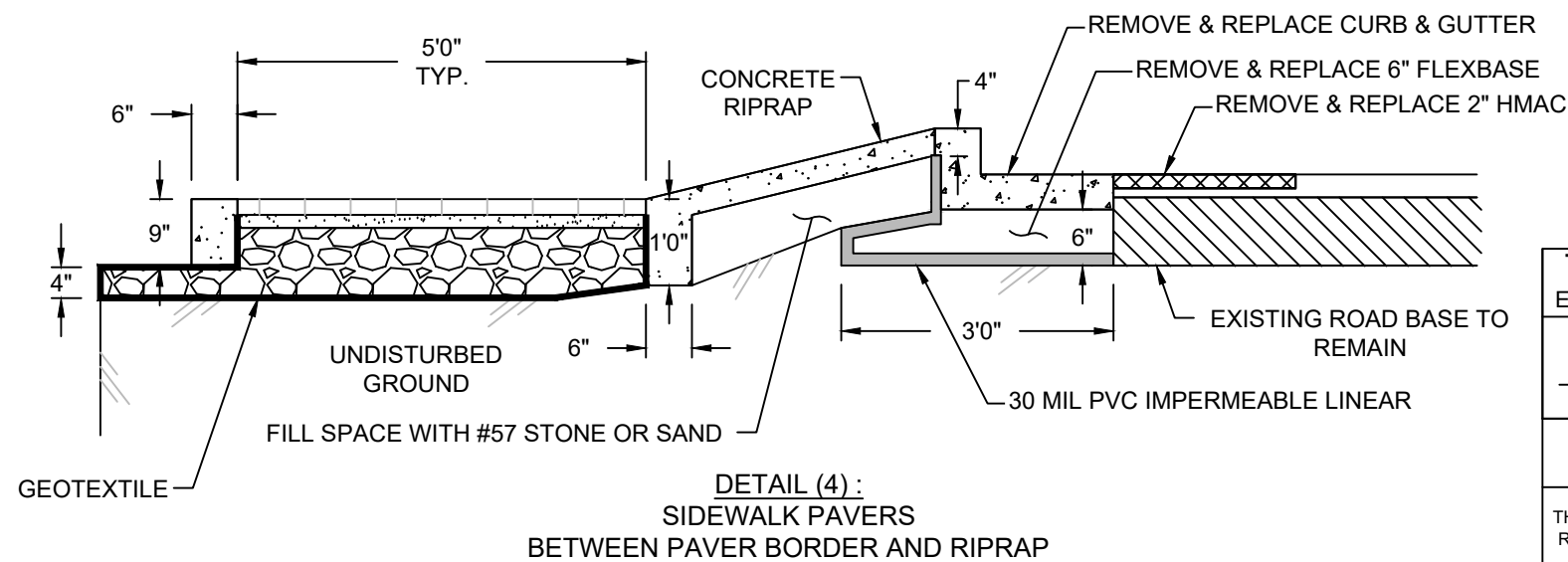
DETAIL (1):
SIDEWALK PAVERS
BETWEEN RETAINING WALL AND CURB



DETAIL (2):
SIDEWALK PAVERS
BETWEEN PAVER BORDER AND CURB

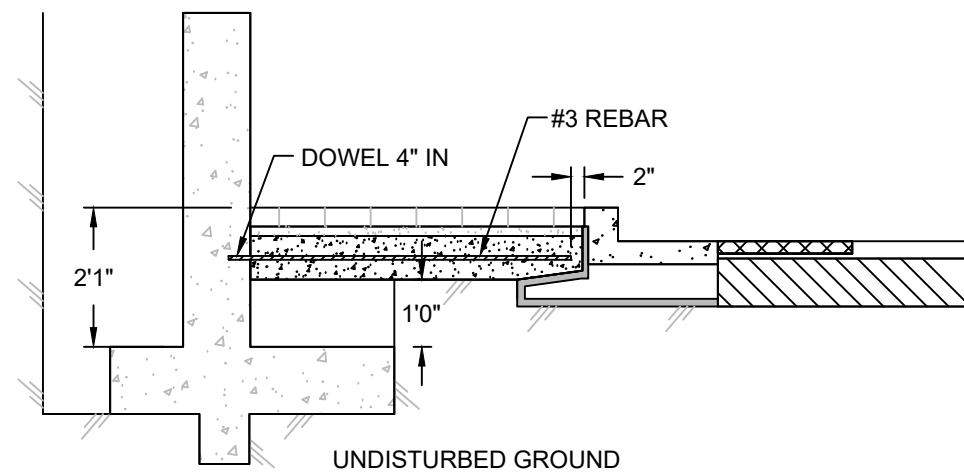
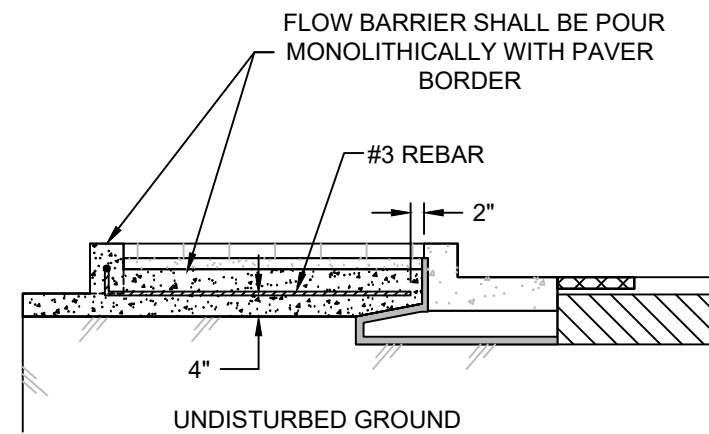
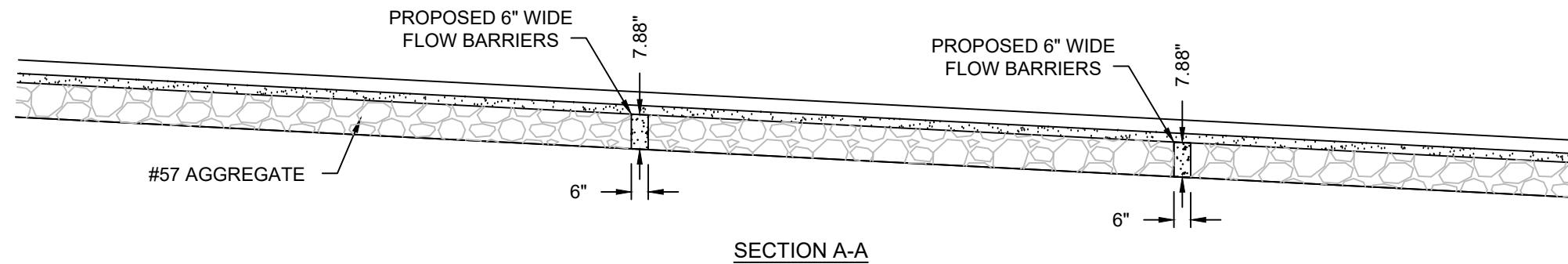
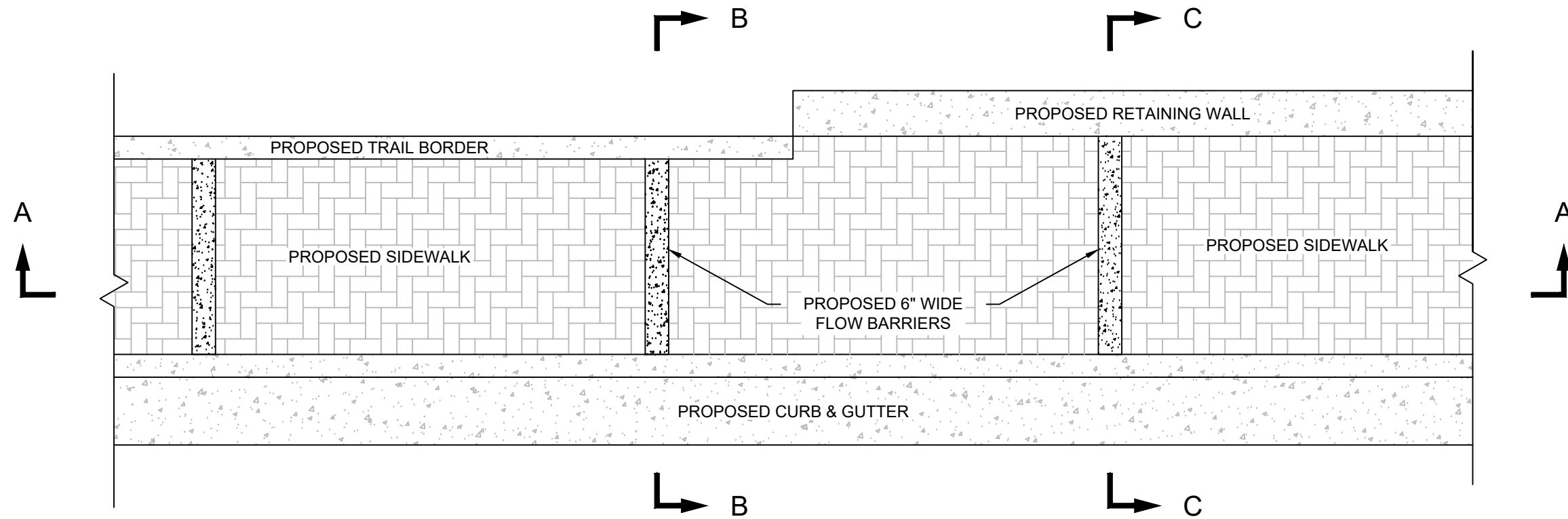


DETAIL (3):
SIDEWALK PAVERS
BETWEEN PAVER BORDER AND PAVER BORDER



DETAIL (4):
SIDEWALK PAVERS
BETWEEN PAVER BORDER AND RIPRAP

The City of San Marcos Engineering and Capital Improvements	CURRENT AS OF 1/1/2021
RECORD COPY SIGNED BY LAURIE MOYER, P.E.	1/1/2020 ADOPTED
SIDEWALK PAVERS	
THE ARCHITECT/ENGINEER ASSUMES RESPONSIBILITY FOR APPROPRIATE USE OF THIS STANDARD.	STANDARD NO. 481S-PP-SM 1 OF 2



NOTES:

1. FLOW BARRIERS ARE SUBSIDIARY TO PAVER SIDEWALK PAY ITEM.
2. FLOW BARRIERS SHALL BE PLACED EVERY 10 FT.
3. REPLACE #57 STONE WITH CLASS A CONCRETE; AS SHOWN ON THIS SHEET.

The City of San Marcos Engineering and Capital Improvements		CURRENT AS OF 1/1/2021
RECORD COPY SIGNED BY		1/1/2020
LAURIE MOYER, P.E.		ADOPTED
SIDEWALK PAVERS		
THE ARCHITECT/ENGINEER ASSUMES RESPONSIBILITY FOR APPROPRIATE USE OF THIS STANDARD.	STANDARD NO. 481S-PP-SM 2 OF 2	